

Jardin Jeanne d'Arc, Paris

The Jeanne d'Arc garden is located in the 13th arrondissement of Paris.

Some large terraces alternate paved and planted areas and constitute the heart of the roof garden. The garden is planted with 450 camellias in its heart and is surrounded by approximately 700 dwellings. The residents use it for play and relaxation. The garden was also designed keeping

in mind the view from the balconies above. Each building entrance has a distinct and recognizable character. The planting density produces luxuriant vegetation of magnolias and camellias that bloom at the end of winter.

Selected Projects

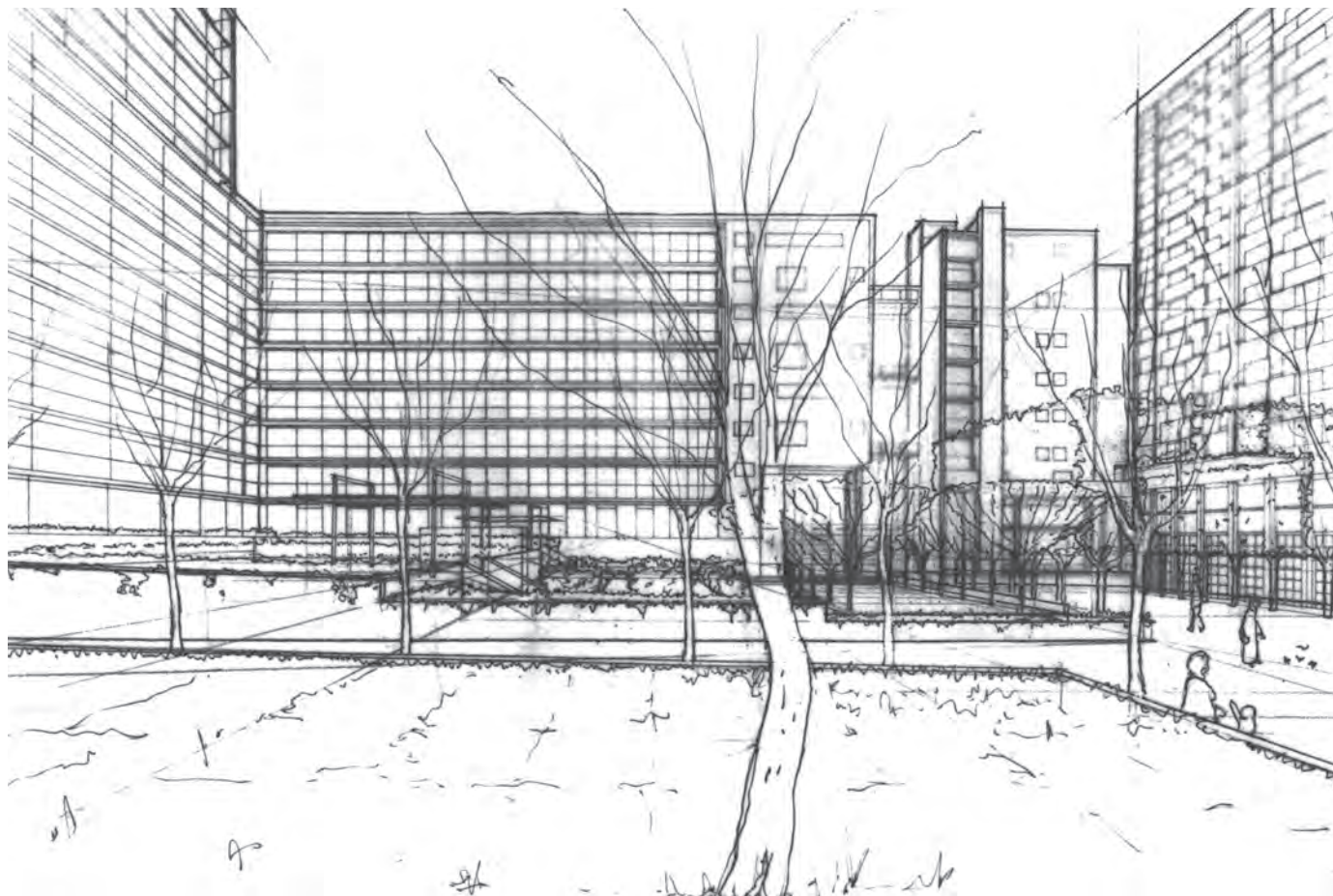
Design:
Christophe Girot
with
M. Devillers & L. Perrot
Architects

Surface:
1,5 ha

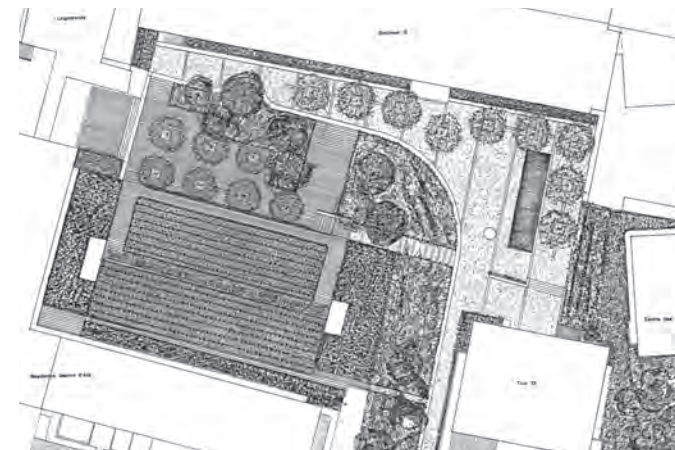
Dates:
Competition 1990
Construction 1992- 1994

Client:
R.I.V.P Immobilière Paris

Budget:
750'000 Euros



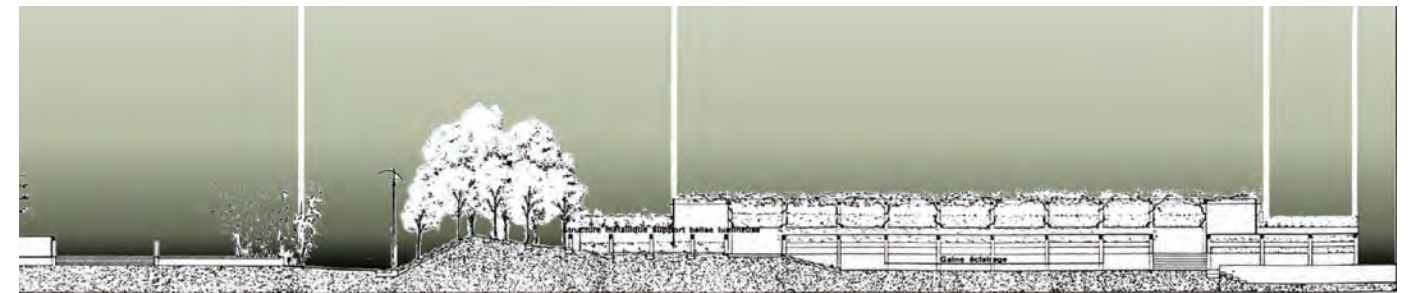
1



6



7



8



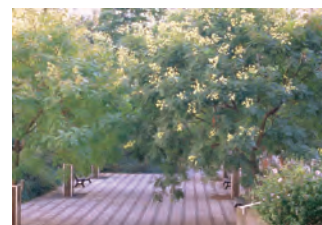
2



3



4



5

- 1 Sketch perspective of the garden
- 2-5 Site images
- 6 Plan
- 7 Courtyard
- 8 Section