

# Letzigrund, Zürich

The area of Letzigrund is situated at the crossing of four existing neighbourhoods of Zurich. It is an area in full development and growth.

The city of Zurich was interested in an overall study regarding this area, which creates a landscape centre between these neighbourhoods. Connections between all these areas were studied and an overall concept defined.

In this concept, a network of "Pocket Parks" defines the dynamic landscape nucleus of this new city quarter with individual piazzas and open spaces. One of the challenges was to define the open space potential and connections between the future constructions projects.

Among these typologies, old train tracks defined new ecological spaces between large

constructions, this connecting all open fields and planted area together.

**Design:**  
Christophe Girot  
with  
Patrick Gmür Architekten AG

**Client:**  
Amt für Städtebau Stadt  
Zürich

**Project Phase:**  
Workshop Study

## Selected Projects

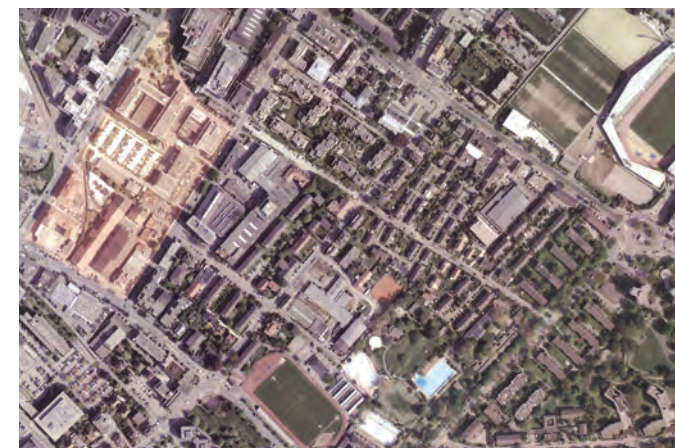
**Surface:**  
40 ha

**Dates:**  
Study 2004

**Budget:**  
N/A



1



6



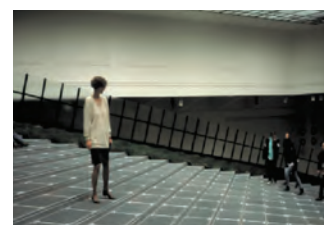
7



8



2



3



4



5

- 1 Plan Letzi Area
- 2 Urban section
- 3-5 Open spaces
- 6 Overview Letzi Area
- 7 Network
- 8 Urban spaces