

# Limmatquai, Zürich

The Limmatquai project was awarded first prize in an open anonymous competition for the Zurich waterfront in 2003.

The proposed waterfront is organized in a two-tiered section with a lower level promenade at the water's edge and an upper level promenade at the pedestrian city level. The project stretches over a kilometre along the central district of the

Niederdorf in Zurich. The waterfront made out of sandstone blocks is conceived as an integral part of the historic district and is decked with traditional stone paving. It is a place designed for both daytime and nighttimes activity.

The winning project was exhibited in 2004 at the Helm Haus in Zurich with 45 other competition entries.

## Selected Projects

**Design:**  
Christophe Girot  
with  
Vues SA

**Client:**  
City of Zürich

**Competition:**  
1<sup>st</sup> Prize

**Surface:**  
4 ha

**Dates:**  
Competition 2003

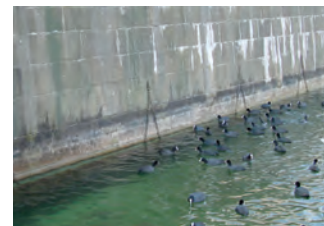
**Budget:**  
35 million CHF



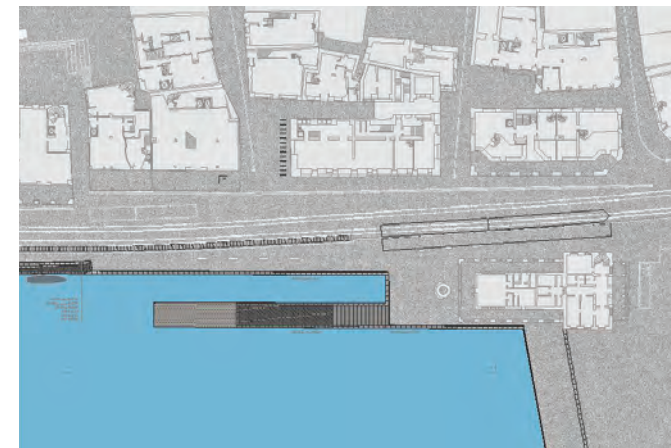
1



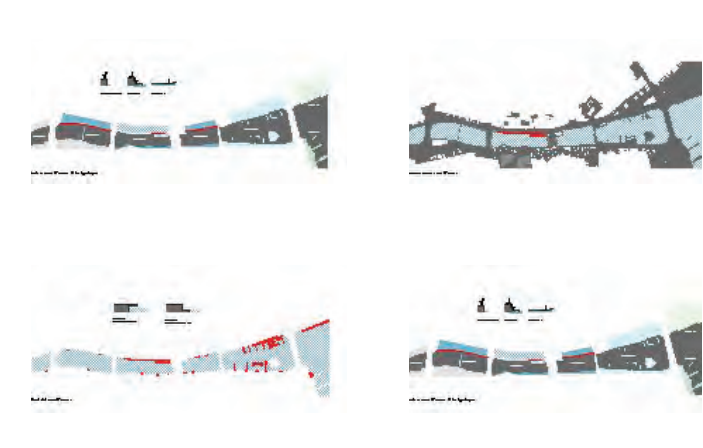
2



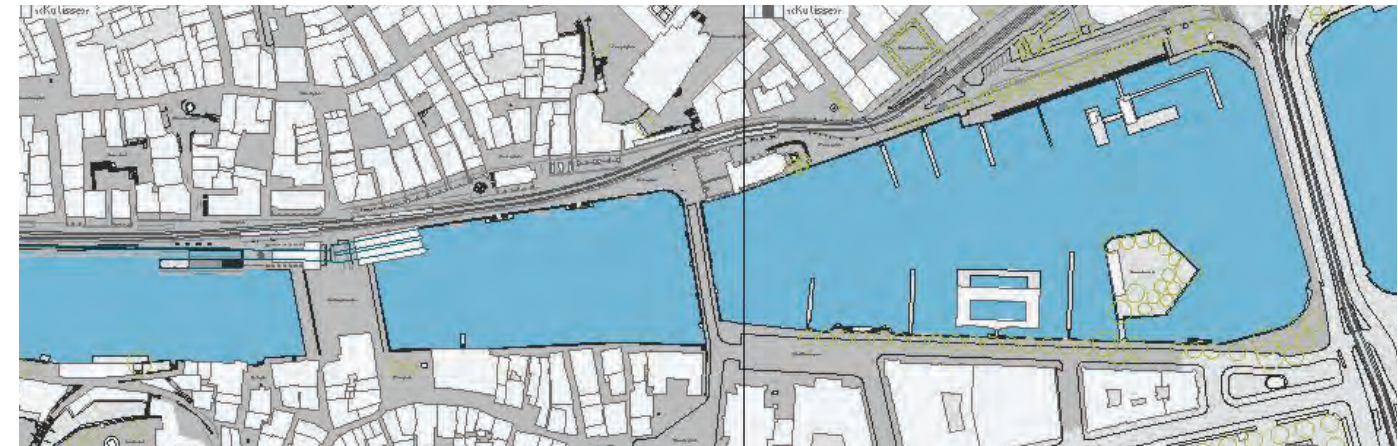
3



4



5



6

- 1 New Limmatquai at night
- 2 New Limmatquai detail
- 3 Existing details Limmatquai
- 4 Detail plan of the Quai
- 5 Urban schematics
- 6 Situation plan Limmatquai