

# Lower Don Lands Competition, Toronto

The Lower Don Lands competition is part of a larger vision for the Waterfront. The Don Mouth Park has objectives to converge urban growth, economical, ecological and leisure interests. The direct correlation between a dense living environment and its immediate natural environment helps foster a new and responsible relationship to nature, where the Don Mouth Park landscape becomes the direct expression of an entirely new form

of urbanity. Here, instead of landscape and city being juxtaposed to one another, they complete each other symbiotically and offer a new way of life. The urban design vision took advantage of the potential of water relationship as the signature for urban identity of this neighbourhood. Fingers of land, having differentiated topographical edge conditions, defined then the quality of spaces and zoning strategies: dense commercial space along

the hard edge of the finger, living and leisure areas on the soft ecological edge. The urban design resolved issues of historical preservation, circulation typologies, private & public leisure areas, and defined volume typologies for the real estate project. The final design is the result a successful combination of experts' knowledge and concerns.

**Design:**  
 Christophe Girot  
 Atelier Girot GmbH  
 with  
 Arup  
 Applied Ecological Services  
 Baird Sampson Neuert Arch.  
 J. Mayer H. Architects  
 Office of Landsc. Morphology  
 Philippe Ursprung  
 ReK Productions

**Client:**  
 Toronto Waterfront Revitalization Corporation (TWRC)

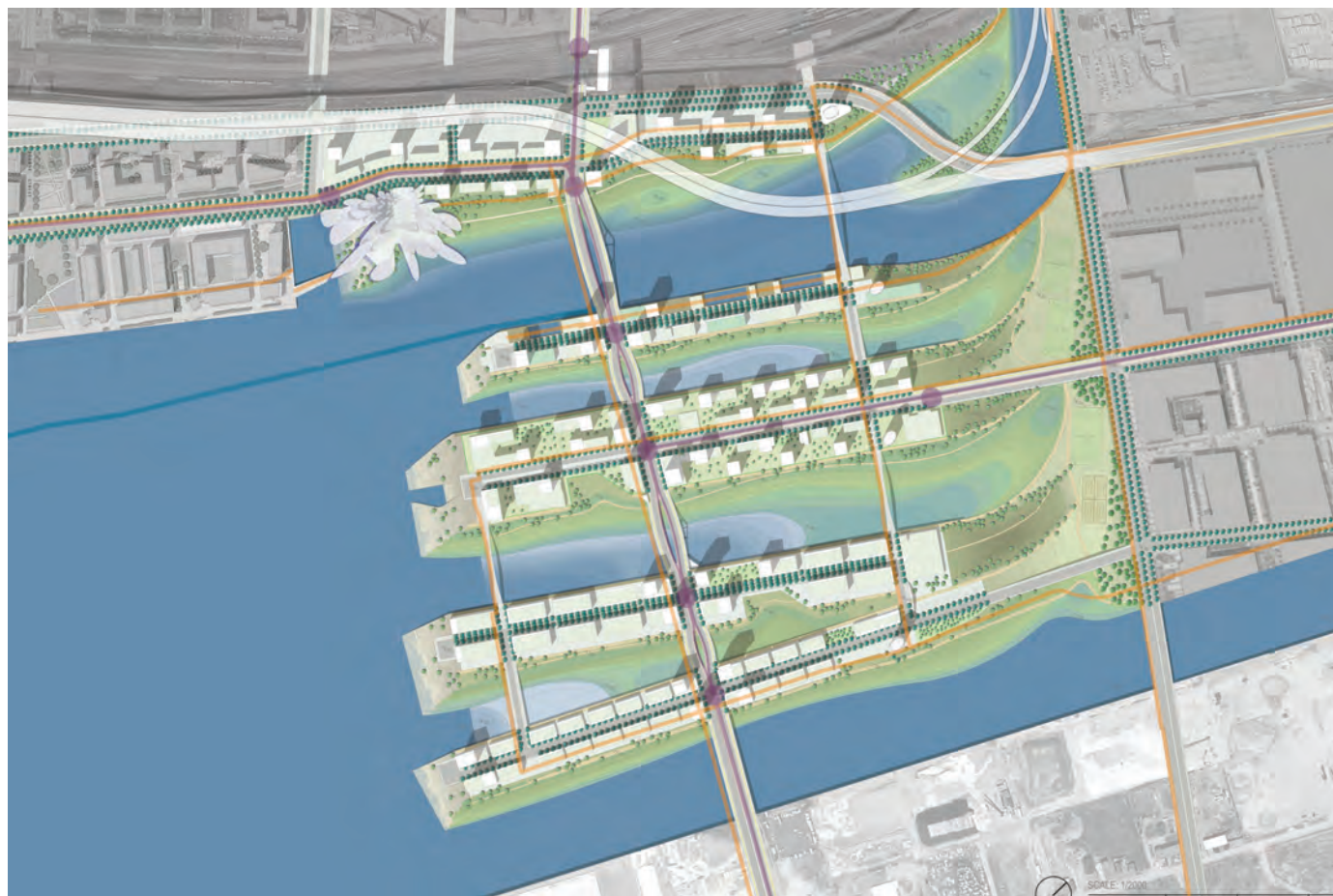
## Selected Projects

**Competition:**  
 Finalist 2007

**Surface:**  
 50 ha

**Dates:**  
 Competition 2007

**Budget:**  
 N/A



1



2



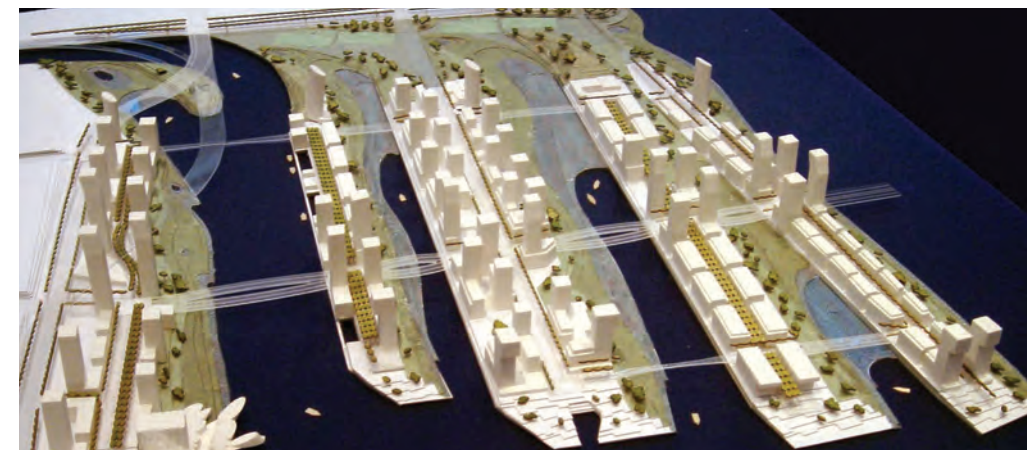
3



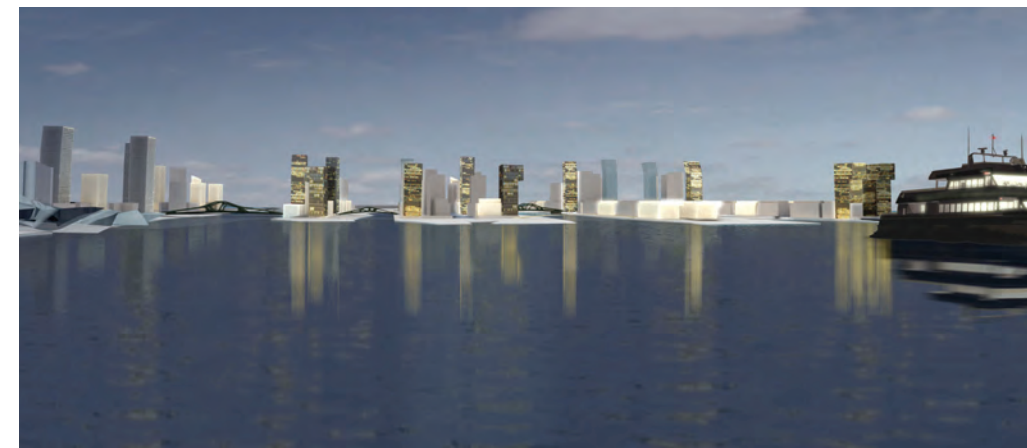
4



5



6



- 1 Urban Plan
- 2-5 Don Mouth Park Fingers: Phases of development
- 6 Model
- 7 Views
- 8 Urban Finger Typology
- 9 Lower Don visualisation



9



7



8