

# Nordküste, Zürich - Affoltern

The main quality of the city of Zurich is its attractive landscape location. The beautiful mountains around and view of the lake has structured the city and its most exclusive development. The North Zurich area extending from the Katzenssee to Seebach and Oerlikon still offers the possibility for a large open space area that reaches far into the structure of the city. The fine topography of the Katzen See valley and the small lakes of this area

serves the neighbourhoods of Affoltern, Oerlikon and Seebach. The study proposes the new vision "North Coast" for this entire area, referring to the renowned "Gold coast" of Zurich along the Zurich lake area.

Nordküste proposes a landscape park designed for variety of leisure activities, contributing to an enhanced quality of life for this underprivileged

neighbourhood. In this study several main city planning concepts are defined: Free space areas, The definition of a new train line as well as new urban landscape vocabulary for the main artery, Wehntalerstrasse.

All these concepts point to the development of a new city centre for Affoltern.

## Selected Projects

**Design:**  
Christophe Girot  
with  
Patrick Gmür Architekten AG,  
Cornelia Schweizer Amt für  
Städtebau Zürich

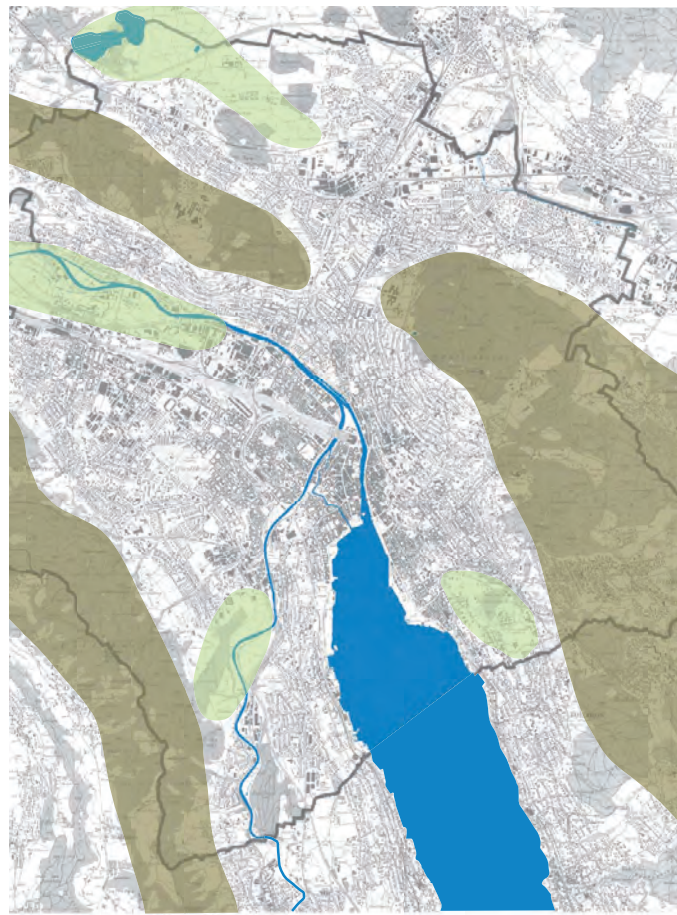
**Project Phase:**  
Concept Study

**Surface:**  
20 ha

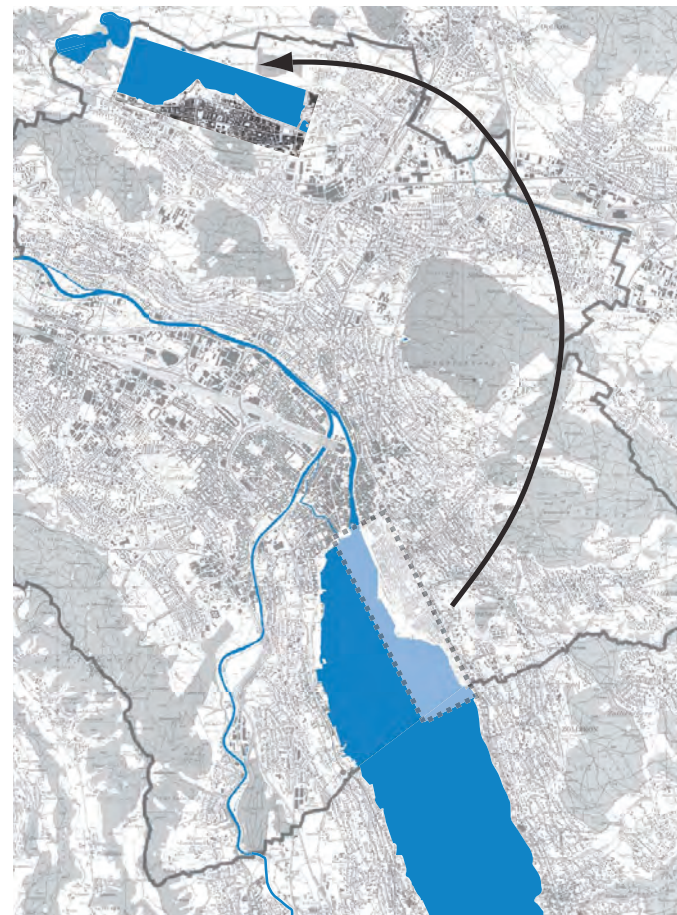
**Dates:**  
Study 2004

**Client:**  
Stadt Zürich Hochbaudepartement  
und Amt für Städtebau

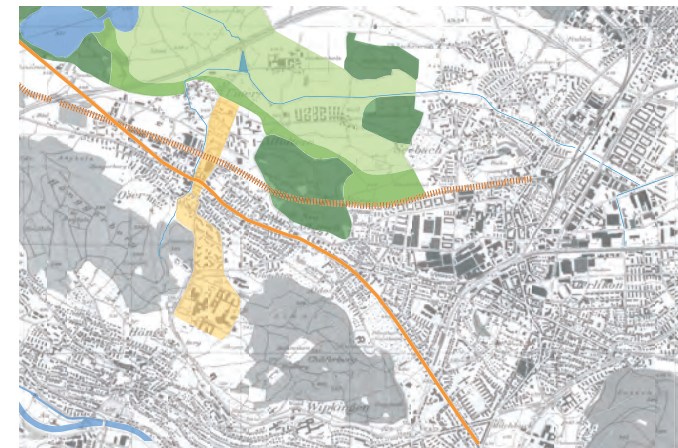
**Budget:**  
N/A



1



2



7



8



9



3



4



5



6

- 1 Existing Zürich- Affoltern
- 2 Transformation Nordküste
- 3-6 Zürich Affoltern images
- 7 Crossing
- 8 Nature, sport and urbanpark
- 9 Along Wehntalerstrasse