

# Parc des Six Arpents, Pierrelaye

The Parc des Six Arpents in Pierrelaye (35 km N.W. of Paris) is a modern version of an old French communal green. Located at the heart of the town, the park is an important link between the old village built along the traces of an ancient roman road (Chaussée Jules César) and a social housing district dating back to the 1960's.

flanked by gardens, a vineyard, a pergola, an archway, and a grove of Albizia trees, that frame a vast lawn nestled in a hollow harbouring some scattered fragments of old garden walls.

The park has a square path around its perimeter



1



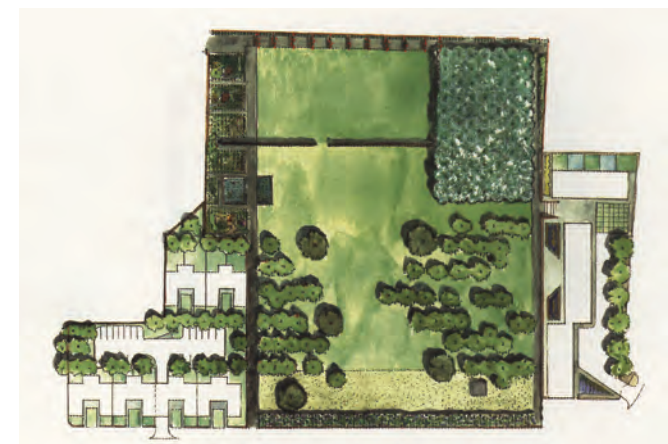
2



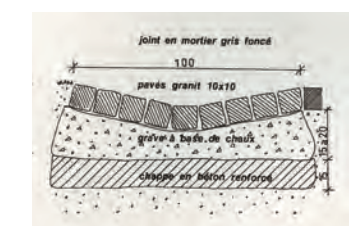
3



4



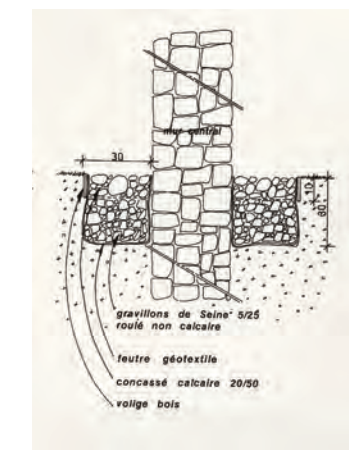
5



6



7



8

- 1 Site image
- 2-4 Images from the Parc
- 5 Plan
- 6 Detail of the pavement
- 7-8 Detail of the wall

## Selected Projects

**Design:**  
Christophe Girot  
with  
Atelier Phusis

**Dates:**  
Competition 1992  
Construction 1997

**Client:**  
City of Pierrelaye

**Budget:**  
460'000 Euros

**Surface:**  
2,5 ha