

Werkhof Scheidegg Competition, Winterthur

The local neighborhood is planned to be developed with the KVA (waste incineration plant) as a connecting landmark with the train station. The competition selected artists to design a fence element, that would bring identity to this dominant structure.

The new KVA promenade connects the existing Sulzer-Allee promenade to the Neuhegi (North) and Talgut (South) neighborhoods. The promena-

de permits a continuation of public space towards a park in front of the train station.

The curving edge which marks the two coloured difference between the promenade and the veloweg invites the public towards the concentrator suspended over the green roof of the addition to the KVA.

Trees such as *Kœlreuteria paniculata* and *Acer campestre* are planted on the inside of the fence

along the St. Galler-Strasse, in order to underline the main identity of the project. Along the promenade, the same tree clusters continue to give a sense of unity and continuity. The clusters offer comfortable sitting areas away from the fence. Reaching a height of 10 meters at maturity, the tops of the trees will reach above the limit of the fence. A green roof is planted with wild thymian and local prairies flowers.

Selected Projects

Design:
Christophe Girot
Atelier Girot GmbH
with
Christina Hemauer
Roman Keller
Gramazio Kohler Architects

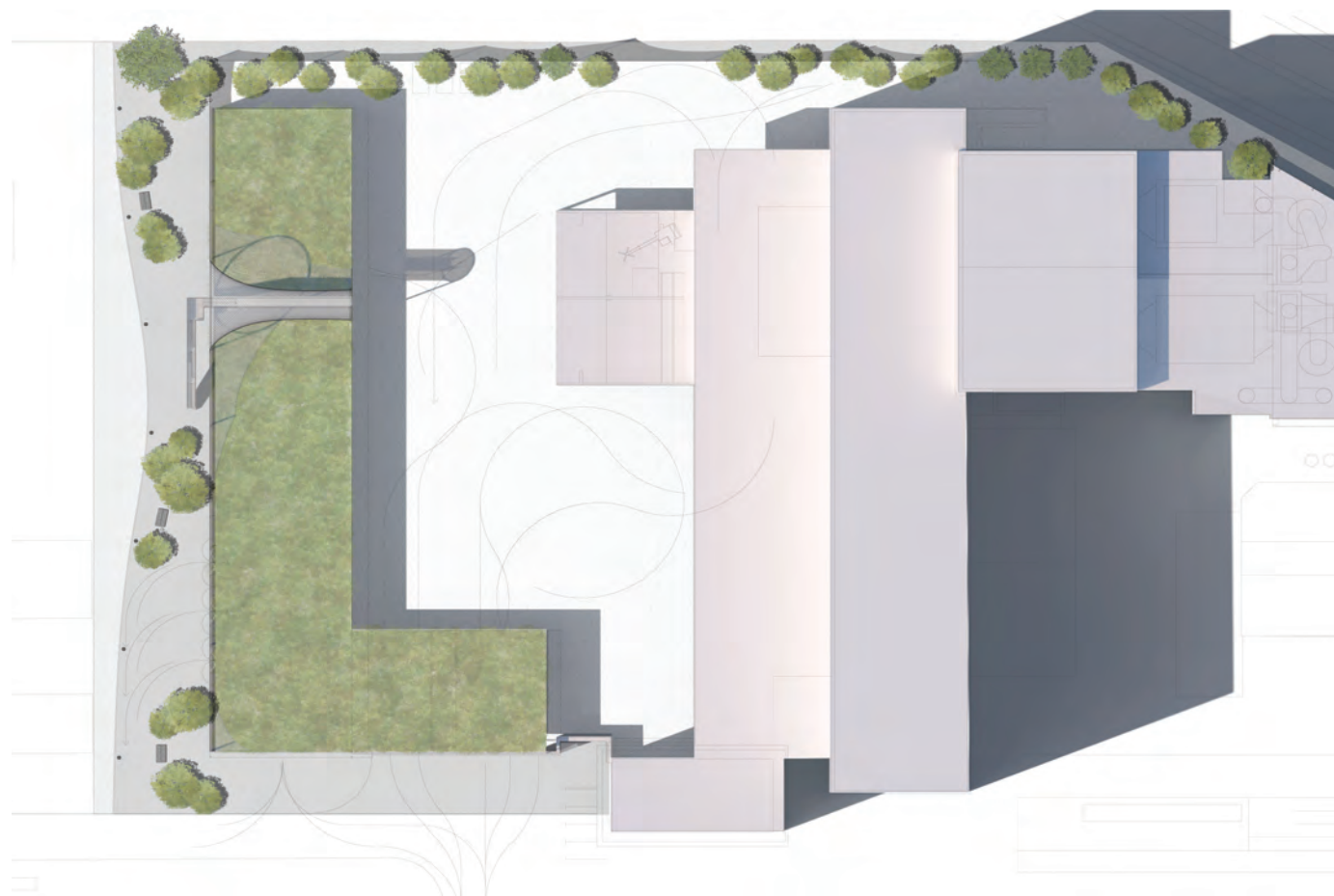
Competition:
Restricted competition

Surface:
2.5 ha

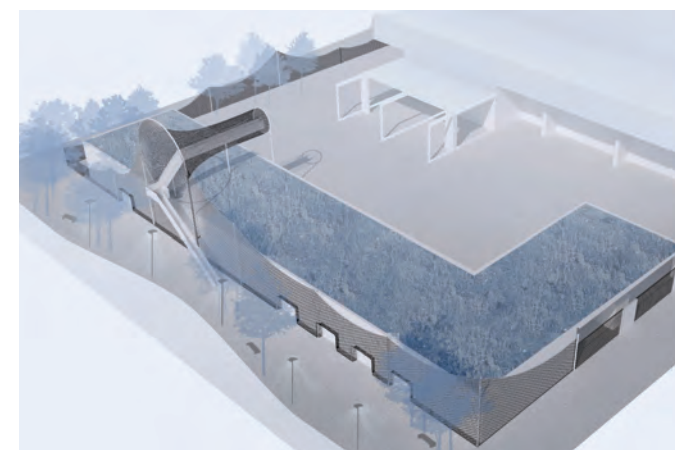
Dates:
Competition 2010

Client:
City of Winterthur

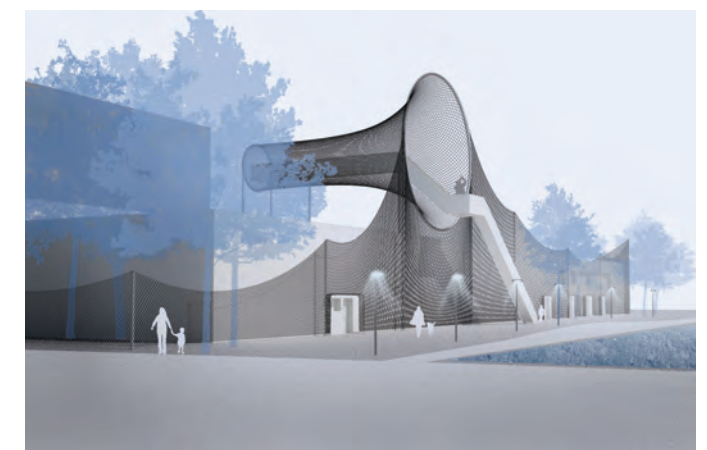
Budget:
400 000 CHF



1



5



6



7



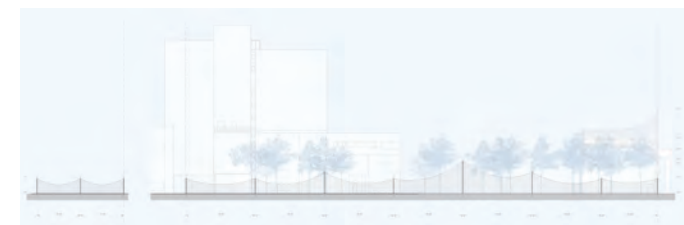
8



2



3



4



9

- 1 Masterplan
- 2-3 Reference images green roof & trees
- 4 Section North
- 5 Top perspective
- 6 Perspective view
- 7-8 Site photos
- 9 Section West